



LRA's Loughton News

20 June 2023

In this issue we report on our new town [Mayor and Deputy Mayor](#) who have been elected by the Town Council.

Also this weekend on Sunday 25 June is the annual [Jessel Green Community Fun Day](#) with free entertainment and low-cost activities provided from 12 noon through until 4pm.

With summer finally with us, we can enjoy the fine days, but please be aware of [the health risks of too much sun and heatwaves](#) and remember that [the Forest is prone to fires](#)

The bridge on Roding Road for the railway line was struck recently by a lorry, so [here's a reminder](#) of what to do if you witness a bridge being struck. Also [be aware of the higher fares](#) for travelling to Heathrow Airport on the Elizabeth Line.

Thank you for supporting LRA, which is 100% run by volunteers locally. You can always [contact us by email](#) to raise an issue, give your views, or offer help.

News Sections

[LRA News](#)

[Planning and Licensing](#)

[Roads, Parking and Travel](#)

[Police, Fire and Crime](#)

[Council News](#)

[Health and Wellbeing](#)

[Local News](#)

[Epping Forest](#)

Your LRA



[LRA Website](#)



[LRA on Twitter](#)



[LRA on Facebook](#)

[Contact LRA](#)

[Links not working? Read the online version](#)

LRA News

New Town Mayor and Deputy Mayor

We are delighted that LRA Cllr Mick Stubbings has become the Town Mayor for 2022-23, and LRA Cllr Katie Valentine his deputy.

LRA Cllr Chris Pond, in his nomination of Cllr Stubbings, said that he had made a very good Deputy Mayor and is an authentic Loughton fellow having been born and bred in Loughton. He has lived his whole life as a Loughton resident and is often seen and known by his fellow councillors walking his dog.



The new Town Mayor congratulated Cllr Katie Valentine on her appointment as Deputy Town Mayor. In nominating her, Cllr Chris Pond described Katie as a worthy Deputy, as she too was born, went to school and has lived her whole life in Loughton. Katie said that she was really looking forward to supporting Mick.

Members also paid tribute to the work of outgoing mayor, LRA Cllr Barbara Cohen, commenting on how well she had fulfilled her role in a proficient and exemplary way. Barbara did a really good job at bringing extra focus and publicity to her role. [More](#)

Notifying Neighbours of Licensing Applications

The District Council has in the past notified neighbours within 150 metres of premises that apply for new licences or changed licensing conditions. The Council has reviewed this activity as it was over and above what the Council was legally required to do and noted that doing so it costs the licensing section more than was generated in income from licensing fees which was unaffordable in these tight financial times and when licensing was required to act under a cost recovery basis.

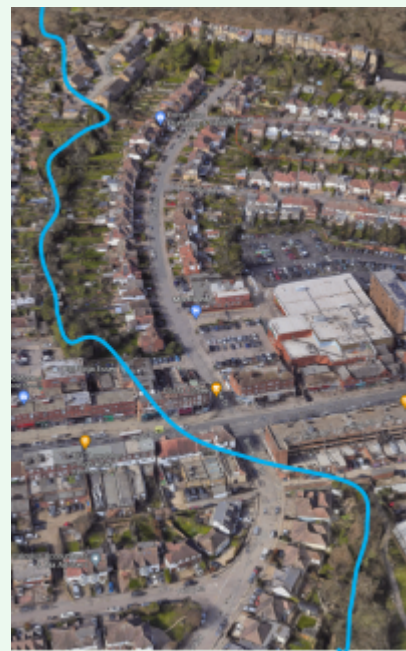
The Council will continue to inform Cllrs, the Town Council and LRA of licensing applications and you can [see all licensing applications here](#).

***LRA Comment:** this change will mean that residents are less likely to hear that licensing applications are made that could affect their own properties and places the burden on the Town Council and other organisations, such as LRA, with their limited resources to inform residents.*

Clearing Loughton Brook

A member recently [read this article on the river Ching](#) - Chingford's neglected stream – and the dumping there. It reminded her of when, in the 1980s, LRA with the support of the District Council cleared the Loughton Brook which was overgrown and full of dumped items, large and small. Residents whose homes backed on to the brook were supportive and gave us access to remove all the debris which council lorries then took away. This was called this 'Operation Clear Stream'. Riparian owners (people or organisations whose property includes the banks of a stream) [are normally responsible for keeping them clear](#).

The Brook was culverted and diverted before Brooklyn Parade was built in 1938. The culverts run from behind 4 The Drive to 2 Brooklyn Avenue, and cut out what was a significant meander where the trees and shrubs in front of Brooklyn Parade now are. You can [see the original course of the brook on this old map](#) from 1896.



Of course the river does not like being diverted and frequently floods (starting in 1947), especially if the gratings over the entrance to the culverts at the end of Clifton

Road get blocked by compost heaps, fencing, branches, etc, or anything (including once a complete garden shed) washed down from the gardens between Forest Road and The Drive. That will flood the High Road. LRA Cllr Chris Pond remembers on one flooding occasion about 1983 when journeying on a diverted No. 20 bus along Staples Road and passing another No. 20 bus on the bridge over the Brook on Shaftesbury. At least the drivers were from Loughton Garage and knew the terrain, emerging at Warren Hill.

Waterways running through built-up areas are often undervalued and neglected when they can be an attractive asset and contribute in many ways to people's enjoyment and a greener environment.

And a little more about The Ching...

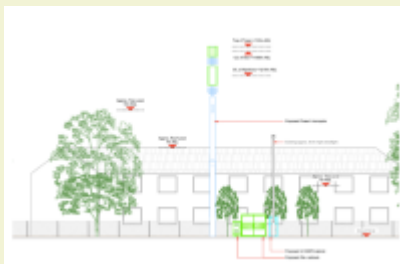
The Ching is of course Loughton's south-eastern boundary with Chingford (and hence since 1965 with London) where the A1069 Rangers Road crosses it, and with Waltham Abbey through and east of Connaught Water, no part of which is in Chingford. Also, the Ching does not flow through Chingford. As well as being the boundary with Loughton and Buckhurst Hill, it is the boundary between Chingford/Woodford and then with Walthamstow, and from Chingford Hatch to its joining the River Lea is entirely in Walthamstow parish. The names Ching and Chingford are a recent back-formation, and its origin from, PH Reaney considered, *Caeging-ford*, the ford [of the Lea] by the settlement of the dwellers by the stumps.

Image: Google

If this email has been forwarded to you, get it sent directly to your inbox by [supporting LRA for only £5 a year](#).

Planning and Licensing

[Read more on our website](#) about Planning and Licensing, the role of the LRA Plans Group (LRAPG), how to get more information and how to comment to the Town Council and the District Council, and to the LRA Plans Group – please have your say.



Rectory Lane.

Mobile Phone Mast, Rectory Lane

A large monopole is being proposed by the network 3 to provide 5G mobile phone coverage. Whilst it is recognised these large structures are necessary to provide the mobile network, LRAPG consider this is a very poor location for the mast. It will be highly visible from lots of windows in Oakley Court and residents on the other side of



Reference [EPF/1270/23](#). The formal consultation period ends 30 June.

120 and 122 Valley Hill

This application proposes demolition of an existing two-storey semi-detached property and one-storey structure to create an eight-unit [Passivhaus](#) development.



LRAPG have objected to this overdevelopment. The height and bulk of the front facade is effectively twice the height of the adjoining buildings and the building comes far too close to the edge pavement on Greensted Road. Whereas the surrounding houses outlines are reduced because of their sloping roofs, this proposal presents solid slabs to Valley Hill and Greensted Road. The bulk is completely out-of-keeping with the area and the materials totally fail to blend in with the surrounding properties.

Reference [EPF/2834/23](#). The formal consultation period ended 23 May but you can still comment to the Council.



Roads, Parking and Travel

Planned Road Closures

- Clays Lane - the road is closed between Golding's Hill and Stanmore Way from until 8 July while scaffolding works are undertaken by BTS Group. [More](#)
- Oakwood Hill - the road will be closed between Roding Road and Chigwell Road from 26 to 28 June for carriageway patching. [More](#)
- Forest Way - the road will be closed from 3 to 5 July for leakage repair works are undertaken by Thames Water. [More](#)
- Pyrles Lane - the road will be closed from 3 to 7 July for repairs to speed humps following joint sealing work. [More](#)
- Church Lane - the road will be closed from 12 to 14 July for carriageway patching. [More](#)



Dates can change so [check here for the latest updates](#), and for other planned roadworks including ones that involve only temporary traffic lights.

A104 Epping New Road Safety Improvements

The government has awarded funding of £1.3m from the Department for Transport's Safer Roads Fund (SRF) ([out of £47.5m nationally](#)) for the A104 Epping New Road from the Wake Arms roundabout to the county border with London. No information has been given about the exact detail of the proposed work however it is understood there will be multiple average speed safety cameras on the 40mph limit road.

This was identified through the annual iRAP (international Road Assessment Programme) report which looks at the safety of lengths of road across the whole of England, rather than at spot locations which is the way local authorities work more normally. As part of this work the A104 figured high enough on the list to warrant funding from the SRF. The SRF are expecting works to commence by around the end of this year and into next financial year.

Given the state of roads locally, some residents may think this could be considered unnecessary compared with Loughton High Road and Alderton Hill, but this money comes from the Government direct, rather than the County Council.



St John's Road New Parking Restrictions

New restrictions will be in force from 31 July on St Johns Road. The existing restriction of no waiting or parking from the corner of Church Hill and St John's Road will be extended on the north side of the road to just past the car park entrance to Sovereign Place.

Central Line Timetable Changes

From 5 June Transport for London took six trains out of the timetable, supposedly to improve reliability. There are 77 trains in the timetable.

The main effect will be to extend gaps in service at certain times of the day, the most annoying of which for Loughton is in the morning when the train departing at 8:37am from Loughton has been withdrawn. That means that the train departing at 8:42am (which comes through from Epping) will probably be rammed.



Railway Bridges

If you witness a bridge strike - where a railway bridge is hit by a vehicle (e.g. getting wedged, falling on to the track, displacing masonry either onto the railway or a road or footpath) **do not hesitate** - call the police on 999. You may avert a catastrophe.

Fares on the Elizabeth Line to Heathrow

As you can now catch the Elizabeth Line at Stratford and go direct to Heathrow, a resident has pointed out that fares are higher than a normal Zone 1-6 journey (although still cheaper than the Heathrow Express).

A single adult journey (using an Oyster card or contactless) from Loughton station to Heathrow stations is £13.30, versus £5.60 using the Piccadilly Line. [You can see fares here](#), but you need to select a Heathrow Rail Station to see the correct fares for the Elizabeth Line.

An alternative option is to take the Elizabeth Line to Hayes and Harlington for a fare of £5.60 (or less off-peak), and take a bus to Heathrow which would even be free if you have a bus pass.

Roadworks in April

In Epping Forest District, County Highways made 140 repairs to roads, fixed 17 pavement defects, fixed 65 streetlights and cleared 423 drains.

Police, Fire and Crime

How Your Information Helps Catch Criminals

A Detective Chief Inspector is appealing to the public to share reports of suspicious activity with police, as while many people post concerns on social media, they do not contact police.

DCI Cadd wants to encourage people to [report online](#) or call 101 if they've witnessed something unusual. A seemingly small piece of information could be the missing link that helps convict a prolific offender or take down an organised criminal gang.

DCI Cadd says: "If something doesn't feel right, it often isn't, so please report it to us. If you've seen something you think we need to know about, you can contact us through [our website](#), by calling 101 or anonymously through Crimestoppers on 0800 555 111."

Rental Fraud

This occurs when would-be tenants are scammed into paying an upfront fee to rent a property. In reality the property doesn't exist, has already been rented out or has been rented to multiple people at the same time.

Criminals often use images or videos of properties already for sale to create their fake listings. Help protect yourself from rental fraud by using a reputable company where possible. Never hand over any money until you or a reliable contact has visited the property with an agent or the landlord.

[More](#) from the police on protecting yourself from fraud.



Meet the Police

Officers will be outside New City College on Borders Lane on Thursday 29 June, 11am-2pm for 'Stay Safe' week. All are welcome to stop by and chat to officers and the other emergency services that will be attending.

More from the Police

[Read more](#) from the police for our local area including other news and crime statistics. The data is updated to April 2023.

Council News

Jessel Green Community Fun Day
Sunday 25 June
12pm to 4pm



In addition to all the usual bouncy castles, inflatables, fun fair rides, there will be a Punch and Judy and a children's entertainer. Essex Kites will be attending with their Kite making workshop and

new this year they will have a Carnival making workshop. There will be the usual free soft play area for the under 5s, a tea and cake tent, food outlets and lots more. [More](#)

This annual not-for-profit community event is organised by Loughton Town Council in partnership with the Red Balloon Foundation, Epping Forest Community Church, and Restore Community Church. The event is also sponsored by the Cottage Loaf pub who will provide live music from 4pm into the evening to round off the day.

Loughton Wombles Picking More

The Loughton Wombles completed another litter pick on 27 May around Hillyfields and Rectory Lane. [More](#)

The next little pick will be on 25 June, at the Jessel Green Fun Day. Can you help? Contact Debbie [by email](#) or call 020 8508 4200.



Summer Activity Programme

The District Council have published their [summer activity programme for July to September](#) (PDF). This includes details of all activities, workshops, events and exhibitions for children and adults happening across the district.

[More](#), including links to book events.

Recycling at Home

From July, the County Council will be sending tools to households in Epping Forest District to help them recycle food at the kerbside. This includes a sticker for their general rubbish bin, caddy liners and a leaflet.

Currently, 26% of food waste in Essex ends up in the general rubbish bin. These tools have helped other authorities increase food recycling by up to 20%. It has also reduced the amount of food waste sent to landfill. [More](#)



Social Spaces

Social spaces are places providing people with support and company (previously known as warm places). Our local social space is at St Mary's Church from 3:15pm to 5:30 on Mondays. [More](#)

Record number of Essex residents sign up for solar panel group buying scheme

This year a record number of Essex residents registered for [Solar Together Essex](#), a group buying scheme for solar panels and battery storage, with over 7100 residents registered for a personalised quote and of these over 1200 households decided to proceed with the installation.

This is the fourth time that the County Council has run the Solar Together Essex scheme. Suppliers are pre-vetted in order to guarantee high-quality products and, by using the buying power of the group, the scheme can offer competitive prices. This year's applicants have received a discount of 32% based on the average installation of 12 panels per household. Solar panels can be highly effective at helping homes become more sustainable, using less carbon while also helping households to cut their future energy bills.

Local News

Taking Care in the Hot Weather

With the recent hot weather, and possible heat waves in summer, take care and look out for vulnerable family, friends and neighbours. Be aware of how to keep cool and hydrated.

[More advice here](#), including about [people at higher risk](#), [signs of heath exhaustion](#), [how to cool down](#) and [be prepared](#).

Also swimming in lakes and reservoirs can be dangerous even if they look inviting in hot weather. This includes lakes in the Forest and Roding Valley Lake.

Also the Fire Service has advice about [using barbecues safely](#), [caravan and camping safety](#) and [bonfires](#). Given [embers from a fire pit set a house alight](#) in Loughton recently, their advice is to ensure coals or wood or anything used in a fire pit or barbecue are completely cool before you move or dispose of them.

And [be careful in the Forest](#).



The Heritage Walk Enjoyed

The Heritage Walk on 27 May in aid of Love Your Library Day was on a sunny and beautiful day, and enjoyed by all. The walk was supported by the Town Council and led by LRA Cllr Pond who was very informative. [More](#)

MBE for Robert Woodland of Loughton

In the King's Birthday Honours list, Loughton resident Robert Woodland was awarded an MBE for services to art and heritage crafts.

His work can be seen in a variety of buildings across the country, including the Palace of Westminster, Buckingham Palace, the British Museum, the Tower of London, Grand Lodge, Harrods, Harvey Nichols, Kensington Palace, Bagshot Park and the Mandarin Hotel.

He has a passion to keep his trade alive and shares his knowledge openly with students from around the world, enthusiastically demonstrating his craft whenever he has a chance. He eagerly prepares to travel to children's school events, fundraisers, and community enrichment events as well as to trade schools. [News article](#) and [interview](#)

Loughton Cricket Club

[Loughton Cricket Club](#) has opened its bar to local residents every Saturday afternoon from 3-8pm to encourage local people to watch a bit of cricket or simply pop in for a quiet drink.

The cricket club has been [part of our High Road since 1879](#) and for those who don't know it, it's a stunning ground in the heart of town with a thatched cottage and cricket taking place every Saturday.

It's a wonderful place to have a drink and enjoy the summer sun at the end of the day, yet so many don't even know it exists.



All local residents are warmly invited. You can find Loughton Cricket Club directly opposite Zizzi's, with the entrance in The Uplands.

Aerial Image: Google

Grass Cutting

Some grass areas may have become overgrown in recent weeks from growth over Spring. In some areas grass cutting in May-June is often deliberately not done so as to allow bulb foliage to die back and thus preserve the bulbs in the ground.

The District Council (via Qualis) regularly maintain our green areas within the district. If you see an overgrown grass area that you think the Council should attend to, [report it here](#).

Beware the Hogweed

Although an impressive sight when fully grown, giant hogweed is invasive and potentially harmful. If your skin comes into contact with hogweed sap, it will very quickly become sensitive to sunlight, often resulting in burns, severe blisters and permanent scarring. [More](#)



Known as Britain's most dangerous plant, it has been spotted across Westminster, south west London and parts of north London so far this year. ([News Article](#))

It's not yet been reported in Loughton, but isn't too far away with sightings in

Stratford and Walthamstow recorded [in this map](#). If you see any, [report it here](#) (scroll down).

Image: [Woodland Trust](#)

Health and Wellbeing

Covid Vaccine

The NHS is also encouraging anyone who hasn't had a first or second dose of the Covid vaccine to come forward for them. Book now to make sure you get both jabs before the offer ends for many people on 30 June. [More](#)

Hospital Developments

Recent announcements from the government have confirmed funding for two hospital developments in our wider area:

- Replacing Princess Alexandra Hospital in Harlow with a new hospital on a new site three miles north east of Harlow, adjacent to the M11. [More](#)
- Redevelopment of Whipps Cross Hospital. [More](#)

Princess Alexandra Hospital, Harlow

The latest Care Quality Commission inspection reports that the hospital 'requires improvement'. [Read the ratings on specific services](#) and [the full report here](#).

NHS Budgets

[It has been reported](#) recently that North East London's NHS has approved budget cuts of £82 million to its spending this year, although which services could be affected is unknown.

The area covered by this health body does not include Loughton but does cover seven boroughs in east London and Barts and Whipps Cross hospitals, which many local residents use.

Epping Forest

Forest Fire Warning

Do not use barbecues or start fires anywhere in the Forest at any time, and do not drop litter in the ancient woodland. Discarded litter and glass bottles can also cause fires. Just the tiniest spark from a barbecue or fire can cause a wildfire. Fires can actually spread underground with heat transferring via roots and beneath the surface.

And please do not smoke in the forest - a discarded cigarette butt can cause a fire.

If you see smoke or fire out of control call 999. If you see people using a barbecue or

have any concerns about fire in the Forest call 020 8532 1010, but please always call 999 if an emergency response is required.

Painting and Unpainting

Local artist Matthew Webber's latest exhibition at the Epping Forest Visitor Centre at Chingford includes a selection of new paintings directly inspired by his experience of the forest. Matthew often uses his campervan as a mobile studio, creating his landscape-inspired abstracts in various locations around the forest, before returning to his studio in Aldersbrook to complete each piece. The exhibition runs until 9 July.

Big Give Green Match Fund: Results

In May, the [Epping Forest Heritage Trust](#) (EFHT) launched '[Halo 50' - saving Epping Forest's ancient tree](#)' appeal through Big Give's Green Match Fund.

The £5000 goal was reached in just three days, and have raised a total of £6,661 throughout the whole campaign. EFHT thank everyone who donated.

Over the course of the next year the funds raised will help ensure volunteers are able to create a 'Halo' of space around up to 70 ancient trees. This will provide them the space, light, and air they need to thrive for many years to come.



Forest Focus - June 2023

Some items here come from Forest Focus. The [latest edition](#) has lots more interesting articles. You can [subscribe here for free](#).

And More

Kids Go Free at London/West End Theatres

Every year, for the whole of August, a child aged 17 or under can go to any participating show for free where tickets are available as long as they're accompanied by a full paying adult. Adults can also buy up to two extra children's tickets at half price and there are no booking fees.

[Tickets are on sale here.](#)

Thank you for supporting LRA. Our next Loughton News email is due to be issued Friday 14 July although that date could change.

Get more from LRA and keep up with what's happening between issues of Loughton News

**For all our Tweets, past issues of Loughton
News and Loughton Life, and more**



For the latest news and items of interest:



You don't need to be registered for either

1. If you find any links not working or anything else is wrong let us know at loughtonnews@LoughtonResidents.co.uk. Links to on other websites are beyond our control and may not work over time.
2. LRA gives no warranty about, and will take no responsibility for, items or services offered – purchasers/users should make their own enquiries, and will be acting at their own risk.

We can be contacted at contact@LoughtonResidents.co.uk

To update your membership details, email membership@LoughtonResidents.co.uk

© 2023 Loughton Residents Association

Promoted by & on behalf of Independent Loughton Residents Association, 28 Brook Road, Loughton IG10 1BP

This email was sent to <<First Name>> <<Last Name>> at <<Email Address>>. You are receiving this email as a member of Loughton Residents Association and have subscribed to receiving emails from us.
[Unsubscribe from emails from LRA](#)