



LRA's Loughton News

1 June 2022

In this issue read about [proposed reforms to the planning system](#), an update on rebuilding [Loughton Library](#) and a reminder of [the public consultation on new ward boundaries](#) in the District.

For the Queen's Platinum Jubilee, [why not go to Hillyfields](#) on the evening of Thursday June 2nd for the beacon lighting, and enjoy the music in the build up? On a more practical note, read how [bin collections will be affected](#) over the long weekend.

Also read about how [Loughton Voluntary Care has celebrated 50 years](#) of volunteering in the community, and our town has [a new Mayor and Deputy Mayor](#).

We are still looking for a volunteer who can use simple Excel to [help manage our lists](#) of *Loughton Life* deliverers. Perhaps you (or someone you know) could help? It's not a big job but is important to the successful delivery of *Loughton Life*.

Thank you for supporting LRA, which is 100% run by volunteers locally. You can always contact us by email at contact@loughtonresidents.co.uk to raise an issue, to give your views, or to offer help.

News Sections

- [LRA News](#)
- [Covid-19/Coronavirus](#)
- [Planning and Licensing](#)
- [Roads, Parking and Travel](#)
- [Police, Fire and Crime](#)
- [Council News](#)
- [Health and Wellbeing](#)
- [Local News](#)
- [Epping Forest](#)

Your LRA



[Contact LRA](#)

[Links not working? Read the online version](#)

LRA News

New District Local Plan

A new Inspector, Jonathan Bore, has been appointed to complete the examination of the draft Epping Forest Local Plan. In [a letter to the District Council](#), he has stated "*I think it unlikely that I will be recommending further large scale substantive changes to key aspects of the plan, including the general amount of development, the spatial strategy or the choice of allocated sites*".

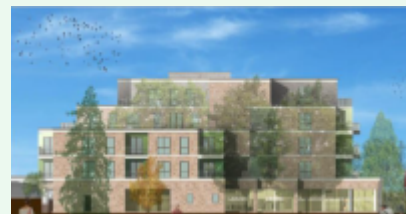
We are now awaiting the Inspector's changes, that will be provided to the District Council shortly.

[Background on our website.](#)



Results of the County Council public consultation on demolishing Loughton Library

The County Council held a public consultation last July on their plans to replace Loughton Library (Traps Hill) with a five-storey building – a ground floor library and 4 floors on top containing 38 flats. The flats would be owned by “Essex Homes” a wholly-owned subsidiary of the Council, who would pay for the development. There would be no encroachment onto the public car park, but the parking area for library staff and visitors would be lost, without replacement.



As we'd heard nothing from the County Council since we used the Freedom of Information Act to get [a copy of the report](#). Not many people responded, given the size of the Library's catchment area (which may indicate a certain cynicism about such consultations). Even the rather loaded question “Do you in principle support a new library for Loughton at zero net cost to the Essex taxpayer?” got support from less than half of the respondents. Overall, the responses from respondents were quite negative or very negative, although the report tries to play this down. As a result of the comments, the Council has made some minor changes to the design.

LRA comment: Five storeys still seems to LRA's Plans Group (LRAPG) to be wholly out-of-character with its surroundings (the Traps Hill car park, the cricket field and the bowls club ground, an area which used be designated as “Urban Open Space”). The new building would be close to the Epping Forest Special Area of Conservation (EFSAC), and the extra basement parking for residents would in LRAPG's view be in breach of the legal requirements on air quality for the EFSAC. LRA County Cllr Chris Pond spoke recently at a County Council Cabinet meeting about the cavalier attitude Essex Homes have to embodied carbon, and also how they were intending to sell swanky flats in a building out-of-character with its surroundings (in this case in Waltham Abbey) for capital receipts. What they propose for Loughton certainly has no demonstrable local support.

[Background on our website.](#)

Planning Reforms

Reforms to the planning system have been proposed by the Government to give residents more involvement in local development, as the Government intends to introduce more consultation with local residents on design codes. There will be a fresh approach to how the planning inspectorate enforces local housing targets, with areas constrained by the green belt able to sidestep “unrealistic” targets if they can

produce a plan that is “well evidenced and drawn up in good faith”. The Government will also seek to force landlords in England to let out empty high street shops.

The main reforms include:

1. Introduction of nationally set "Development Management Policies" which cannot be contradicted or repeated in local plans. This is likely to cover standards such as daylight and sunlight, parking, internal space standards, etc. LRA Plans Group (LRAPG) are concerned about this top down one size fits all approach which may prevent councils from adopting their own bespoke standards to address the local needs of their area.
2. Street votes - no detail has been provided on this part of the Bill yet. It is likely to allow the occupiers of streets to vote on what development they would like to see on their streets, particularly vacant sites. LRAPG are concerned about the implications for other residents who don't live on but back onto these streets.
3. All councils must adopt a design code for their whole area. LRAPG are concerned where the resources are to write these codes and how they can address the variation of design in streets in council areas. LRAPG also don't know if street votes can override local design codes.
4. A new Infrastructure Levy to replace the current Community Infrastructure Levy and Affordable Housing policies.
5. Simplification of Neighbourhood Plans.
6. Tighter planning enforcement powers.
7. A new power to force owners to auction high street shops where they have been vacant for longer than 12 months.
8. Councils will no longer need to maintain a rolling five year housing supply if their Local Plan has been adopted within the last 5 years.
9. Planning Section 106 agreements to be restricted to large scale developments. We are concerned how the council will enforce its mitigation measures for protecting the EFSAC if the means of securing financial payments for every new home granted, is removed.
10. A new discretionary tax for councils to impose on second homes.

More detail will be released by the Government over the coming months.

***LRA comment:** 94% of our District has Green Belt (or equivalent) protection. We would obviously welcome an end to the Government's pressure on the District Council for more housing in areas of the District, like Loughton, that are already heavily-built up, and where more building will inevitably adversely affect the Epping Forest Special Area of Conservation. The other measures, as far as they can be determined, look like mere tinkering with the planning rule.*

Ward boundaries in Epping Forest

As we reported in [our previous news email](#), the Local Government Boundary Commission for England is asking for your views on their electoral review of Epping Forest District Council. The review will agree new ward boundaries across the council. The LGBC has not yet proposed any new wards, however it has proposed 54 councillors, rather than the current 58.

[You can have you say online](#) until July 18th.

If this email has been forwarded to you, get it sent directly to your inbox by [supporting LRA for only £5 a year](#).

The District Council collect waste small electrical items every week. Bag them and leave them on top of your bin to be collected. [More](#) (p4)

LRA Cllrs Chris and Caroline Pond have noticed that some electrical items bagged up and left overnight have been removed and the bags dumped. This has been reported to the District Council. Waste electrical items are of some value as scrap, but if it is diverted from its proper channels it can cause pollution.

If possible, don't leave it out overnight, and report any persons seen in the dead of night scouring dustbins.

179-181 High Road (Aura, was Cafe Rouge)

The building is currently being refurbished for a new restaurant. Residents in Station Road have raised concerns with the building work and enforcement notices have been issued by the District Council. However these notices do not appear to be having the desired effect.

LRA Cllr Howard Kauffman has been following up with the Council's planning enforcement team, unfortunately with not much success to date.

The Licensing application for Aura will be considered by the District Council on June 7th,

You can [report planning breaches here](#).

Street Advertising

LRA was approached by a resident for another affliction that seems to be affecting Station Road, this time by a plethora of banners, advertisements, and promotional gear at the dentist at 21 Station Road. Rules relating to ads on commercial premises are complex, and does a dentist count as commercial or professional?

The complainants were advised in the first instance to [report it on the District Council's website](#). If there isn't a satisfactory outcome, LRAPG can be engaged.

Could you help manage our rota of newsletter deliverers?

We produce five editions of *Loughton Life* each year. We need someone to maintain the lists of the volunteers who deliver them across the town (other people receive the copies, split them up into individual delivery rounds and distribute them).



To find out more, please contact David at david.linnell@LoughtonResidents.co.uk or 07958 984278 for a no-obligation chat.

Covid-19/Coronavirus

Coronavirus (COVID-19)

The government has removed remaining domestic restrictions in England. There are still steps you can take to reduce the risk of catching and spreading COVID-19:

- [Get vaccinated](#)
- Let fresh air in if meeting indoors, or meet outside
- Consider wearing a face covering in crowded, enclosed spaces

 [Find out more about living safely with COVID-19](#)

More from the [government](#) and [advice from the NHS](#)

Vaccine information for Essex

[Read more](#) on getting a vaccine. It's never too late to come forward for your first, second or booster dose of the vaccine. You do not need to be registered with a GP and can use [a walk in centre](#) or [book an appointment](#), or call 119 for more help (translators are available into different languages on request).

Currently there is no walk-in centre in Loughton. If you live in Essex and need help to book an appointment, phone 0344 2573 961 (open 10am to 4pm, local rate).

Local Infection Rates

Infection rates locally have been about 10-20 infections reported per day recently. The [local data for Epping Forest is here](#), along with [this interactive map](#).



Planning and Licensing

[Read more on our website](#) about Planning and Licensing, the role of the LRA Plans Group (LRAPG), how to get more information and how to comment to the Town Council and the District Council, and to the LRA Plans Group – please have your say.

202 High Road and 204 High Road

Works seem to be taking place inside these two units that were previously occupied by Pak Choi and Clintons. So far, no planning or licensing applications have been submitted. There was talk of both units being combined to be used for several pop-up shops but nothing has been confirmed to date.

Gardeners Arms pub, York Hill

The District Council Licensing sub-committee recently reviewed the licence and decided, amongst other things, to restrict the outdoor seating to 30 persons on the stone terrace only and not on the area outside the main frontage of the pub. We have now been told the pub has bought new seating and is ignoring the new restrictions.

We trust the Council will take the necessary action to enforce the conditions the sub-committee has imposed on the pub to protect nearby residents.

We understand the pub has now appealed to the Magistrates Court.

Roads, Parking and Travel

Planned Road Closures

- Alderton Hill - the road will be closed between Station Road and 19 Alderton Hill from June 6th to 10th (overnight 8pm-5am) for road resurfacing. [More](#)
- Alderton Hill - the road will be closed between Station Road and Roding Road from June 10th to 13th (10am and 3pm). for replacement of the speed hump. [More](#)
- Alderton Hall Lane and Poundfield Road - the road will be closed between 9:30am to 3:30pm on June 26th for pole replacement works by Openreach. [More](#)
- Lower Road - the road will be closed from June 29th to July 1st for blockage clearance work by Openreach [More](#)



Dates can change so [check here for the latest updates](#), and for other planned roadworks.



Queen's Platinum Jubilee weekend

There will be some road closures to allow for street parties over the bank holiday weekend, especially for The Big Jubilee Lunch on Sunday June 5th. To be legal the organisers will have applied to the District Council for a temporary road closure.

Blocked dropped kerb?

Not sure what to do if you see a car parked on a dropped kerb that's blocking access? Read the North Essex Parking Partnership's blog [here](#) to find out what you should do, and who to report it to.

Transport for London's new Tube map

[The tube map](#) now includes the Elizabeth line. More about the line [here](#).

If travelling into central London by tube, you can change to the Elizabeth line at Stratford. Trains terminate at Liverpool Street station, where you will need to change trains to continue on the rest of the Elizabeth Line to central London and Paddington

station. ([A detailed map of the line is here](#))

From autumn 2022 you be able to travel from Stratford westwards all the way to Paddington without changing trains at Liverpool Street.

New M11 Junction 7A to open in June

This new junction to ease travel in and around Harlow will open this month and has involved widening of the B183 Gilden Way/Sheering Road and the installation of a new Link Road to connect the two. [More](#) and [map](#).

Have your say on ULEZ expansion

Transport for London (TfL) are consulting on proposals to expand the [Ultra Low Emission Zone \(ULEZ\)](#) London-wide on 29 August 2023. They want to hear [your views](#) on their proposals. These proposals are part of the commitment by the Mayor of London and TfL to help improve air quality and public health, tackle the climate emergency and reduce traffic congestion across Greater London.



The expanded area would cover most of Greater London, up to the LEZ boundary, which broadly follows the Greater London Authority boundary and provides opportunities for vehicles to divert away from travelling into London. There would be a daily charge of £12.50 if you drive within the zone, which would operate 24 hours a day, seven days a week, 364 days a year, excluding Christmas Day. 82% of

vehicles in outer London are already ULEZ-compliant.

Police, Fire and Crime

Alderton Hill collision – can you help, please?

Essex Police want any information, CCTV, dash cam or other footage you may have about an incident where a refuse collector, a man in his 40s, was in a collision with a black Mercedes S350; it happened in Alderton Hill shortly after 2.25pm on March 10th as he crossed the road. He sustained a broken leg and was taken to hospital for treatment. Following surgery he was released from hospital but, sadly, died on April 20th.

The police are investigating to see if there is a link between the injury he sustained and his death and these enquiries are ongoing (a 62 year-old man from Chingford has been questioned on suspicion of careless driving). [Submit a report online](#), use the [Live Chat service](#) or call 101 (Please quote incident 625 of March 10th). You can also call Crimestoppers 100% anonymously on 0800 555 111.

Keep garages and sheds secure

Many people don't secure their shed or garage in the same way they do their homes - often using an easy-to-break lock or padlock to protect valuable contents such as a car, bike or lawnmower.



An opportunistic burglar will try a shed or garage first because they can find the tools they need to break into the main house.

Make sure your outbuildings are secured with strong modern locks to help prevent break ins.

[More](#)

Fraudsters deliberately target Older and Vulnerable people

Tactics used by courier fraudsters have been revealed by the police, which often start with a unsolicited phone call. [More.](#)



Take Five To Stop Fraud

Stop: Taking a moment to stop and think before parting with your money or information could keep you safe.

Challenge: Could it be fake? It's okay to reject, refuse or ignore any requests. **Only criminals will try to rush or panic you.**

Protect: If you think you've been a victim of fraud, contact your bank immediately and report it to [Action Fraud](#) online or phone 0300 123 2040.

How to beat the scammers

The following advice came from Amazon, but it could help you beat other attempts by scammers that attempt to impersonate firms. Remember these important clues so that you can identify scams and keep your account and information safe:

1. Never feel pressured to give information (such as your credit card number or account password) over the phone, especially if the call was unexpected. Scammers may try to use calls, texts, and emails to impersonate Amazon customer service. If you're ever unsure, it's safest to end the call/chat and reach out directly to customer support through the Amazon app or [website](#).
2. Never pay over the phone. Amazon will never ask you to provide payment information, including gift cards (or "verification cards", as some scammers call them) for products or services over the phone.
3. Trust Amazon-owned channels. Always go through the Amazon mobile app or website when seeking customer support or when looking to make changes to your account.
4. Be wary of false urgency. Scammers may try to create a sense of urgency to persuade you to do what they're asking. Be wary any time someone tries to convince you that you must act now.

For more information on how to stay safe online, or to report suspicious communications, visit [Amazon Customer Service](#).

Council News

New Town Mayor and Deputy Mayor

We are delighted that LRA Cllr Barbara Cohen (right) has become the Town Mayor for 2022-23, and LRA Cllr Michael Stubbings her deputy. [More.](#)

Image: Town Council



Beacon-lighting on Hillyfields

The Town Council has announced [detailed plans to light a Beacon](#) for the Queen's Platinum Jubilee on the evening of Thursday June 2nd, and hopes to see as many residents as possible there.



Stroll across to the top of Hillyfields Open Space, IG10 2NH from 9.15pm onwards, bring your own refreshments and enjoy the music in the build up to the Lighting Ceremony at 9.45pm.

Queen's Platinum Jubilee weekend - Bin Collections

Collections will be different over the bank holiday weekend:

- Collections due Thursday June 2nd will be collected on Saturday June 4th.
- Collections due Friday June 3rd will be collected on Monday June 6th

Normal collection days resume on Tuesday June 7th. [Everything about bin collections is here.](#)

Future Elections and Photo ID

The Government has changed the law for future elections and you will have to show photo identification when voting in person. The main forms of ID will be a passport, photo driving licence, or English National Concessionary Travel Scheme (ENCTS) bus pass.

If you don't have access to one of these you will need to get a voter identification document (VIDD) from the District Council. This will be different to the Poll Card, which will not be acceptable as identification.

Further details are yet to be announced (including how to get a VIDD), so it is not yet time to ask the District Council for one.

Safeguarding children

The County Council has a significant responsibility to safeguard children, but probably few residents appreciate what's involved. You can find out more [here](#), which gives the Essex Safeguarding Children Board report to the Council's People and Families Policy and Scrutiny Committee.

Local News

Local activities, events and community groups

Check out the District Council's [new brochure](#) for regular activities and one off events plus other good stuff, including community groups across the district, a grant scheme and exciting volunteering opportunities. The Council's Community, Culture & Wellbeing Team are there to help boost health and wellbeing across the District, and to reduce isolation and provide a varied sports, recreation and culture programme for residents.

Loughton Voluntary Care (LVC) celebrates 50 years of volunteering

LVC celebrated 50 years of volunteering at the Cottage Loaf pub on May 12th, with volunteers, Town Cllrs, the Mayor LRA Cllr Rose Brookes and other supporters. There were heart touching speeches, flowers, sentiments, poems and loads of memories were shared during the event.

[More on Facebook](#), including photos of the event.

LVC provides transport for older or less mobile residents to medical appointments – hospitals, clinics and surgeries. They also provide good neighbour services such as visiting and shopping services to housebound residents. LVC is committed to supporting older people in their desire to live independently and to support their social inclusion and is entirely volunteer-led. [More](#)

Health and Wellbeing

Is it getting older, or dementia?

People often start to forget things more as they get older. Most often this is a normal sign of ageing. But for someone with dementia, changes will be different, more serious and will affect their life more. [Learn more](#) about the differences between normal ageing and dementia.

Epping Forest



Cattle in the Forest

Cattle have historically grazed Epping Forest for hundreds of years with some 66 cattle now grazing across the Forest. Cattle help to create the ecosystems on a micro and landscape scale which have existed in Epping Forest for thousands of years. Without them many other species would

struggle to find the habitats they need.

You can find out more about cattle in Epping Forest at a new exhibition at the Visitor Centre at Chingford. [More](#)

Image: [Forest Focus](#)

Sounds in the Forest

If you are in the Forest and stand under one of the trees, you'll hear hundreds of caterpillars chomping away. Many bird species rely on a good supply of caterpillars to feed their young.

Image: [Forest Focus](#)



Forest Focus May 2022

Find out what's happening in the Forest, including Open Air Theatre over the summer, with the [May issue of Forest Focus](#).

Cycling in the Forest

Epping Forest has 284km of shared-use paths which makes it a great place to explore by bike, whether you're looking to relax, get fit, or just looking to avoid cars and roads on your way from A to B. But please remember that "shared-use" means that there will be other people using the paths, some of them with mobility difficulties, so please be considerate. You can see more [here](#), plus a [useful map of the Forest](#), and an [interactive map of the Forest cycle racks](#).

And More

Loughton station – the failed pioneer

[Watch this video](#), which looks at the history and architecture of Loughton station.

As the video (8 minutes long) says, depending on how you count these things, our current station is Loughton's second or third station. However LRA Cllr Chris Pond says arguably you could count five:

- On the site of Cafe Rouge, and extending to St Marys church, 1856-65.
- The excursion station, alongside the rear gardens of Lower Park/Meadow Rd 1865-c1890.
- Down near the underpass of Great Eastern Path and accessed from Algiers Rd, 1865-1940.
- The present station, 1940-today.
- The parcels and goods station, 1948-90, later Stevenson's car premises.



Thank you for supporting LRA. Our next Loughton News email is due to be issued Friday July 1st although that date could change.

Get more from LRA and keep up with what's

happening between issues of Loughton News

For all our Tweets, past issues of Loughton News and Loughton Life, and more



For the latest news and items of interest:



You don't need to be registered for either

1. If you find any links not working or anything else is wrong let us know at loughtonnews@LoughtonResidents.co.uk. Links to on other websites are beyond our control and may not work over time.
2. LRA gives no warranty about, and will take no responsibility for, items or services offered – purchasers/users should make their own enquiries, and will be acting at their own risk.

We can be contacted at contact@LoughtonResidents.co.uk

To update your membership details, email membership@LoughtonResidents.co.uk

© 2022 Loughton Residents Association

Promoted by & on behalf of Independent Loughton Residents Association, 28 Brook Road, Loughton IG10 1BP

This email was sent to <<First Name>> <<Last Name>> at <<Email Address>>. You are receiving this email as a member of Loughton Residents Association and have subscribed to receiving emails from us.

[Unsubscribe from emails from LRA](#)