



LRA's Loughton News

13 January 2023

In this issue you can read about [problems with street lamps](#) and what to do about if you about [noise from licensed premises](#).

There's also an update on the continuing problems with [waste and recycling collections](#), and a reminder on what to do with [water supply problems](#).

With the cold winter and high energy costs, remember there are [seven warm place locations locally](#) with free, safe, warm and comfortable space for those who need it.

Nominations are now open for the [Loughton Citizenship Awards](#), and winners have been announced for last year's [Christmas Card](#) and [Christmas Window](#) competitions.

New maps are now available that show [what trees are protected in town](#), and [whether sewage is being spilled](#) into the River Roding.

Thank you for being part of LRA. You can always [contact us by email](#) at to raise an issue, give your views, or offer help.

News Sections

[LRA News](#)

[Planning and Licensing](#)

[Roads, Parking and Travel](#)

[Police, Fire and Crime](#)

[Council News](#)

[Health and Wellbeing](#)

[Local News](#)

[Epping Forest](#)

Your LRA



[Contact LRA](#)

[Links not working? Read the online version](#)

LRA News



Apology for Missed Bin Collections

The District Council has apologised for the ongoing issues with domestic waste and recycling collections.

Poor performance by waste and recycling contractor Biffa over Christmas and the New Year has compounded problems due to the severe weather earlier in December. While the pre-Christmas cold snap exacerbated the current difficulties, the recent problems are part of a longer term trend.


There are many causes to the current situation. The District Council may now be questioning the wisdom of redeveloping the old refuse vehicle maintenance depot on Langston Road and getting Biffa to maintain depots instead, along with a fleet of new lorries which may all need replacing at once. LRA has pointed this out in the past.

If your collection is missed, [check here first](#) to see if Council already knows, in which case leave your bins out to be collected. [More on what to do](#) if this does not happen. Currently there are dozens of streets in our town that have not had recycling or food and garden waste bins collected.

As reported previously the Council have now decided go to market and run a full procurement process for the Waste/Street Cleansing contract which expires in November 2024.

Street Lamps

We understand there have been a lot of complaints about dead street lamps. Street lamps in Essex managed by County Council are centrally controlled and monitored, so the Council can easily check if a report is correct. [Report it online](#) - you will need the exact location, and number (on a square white label about four feet from the ground).

You can also [check to see if a fault has already been recorded](#) online. Use the map to zoom in or enter a postcode or street name to search. Look for the pink blob symbol  for faulty street lights,

(Some street lamps are managed by the District Council - read our Street Lighting news item from [our last news email](#).)

If the lamp is in Loughton Central, and nothing happens after, say, 2-3 weeks, [let us know](#) and LRA Cllr Chris Pond will chase it up.

Some faults take ages to repair. e.g. if spares are no longer available, or when there is a fault with the underground supply to the lamp. Records show one was repaired in 29hrs on 28 December 2022, but several took over two years.

High Road Noise Complaints

We are aware of residents' complaints of noise recently from a restaurant on the High Road.

If you are suffering from noise, you can complain to the District Council - [here's how](#). You can also call 01992 564608 during office hours or 01992 564000 at all other times.

For complaints about noise from licensed premises, the District Council need residents to [report them](#). This is used as evidence in any investigation and to support a potential review of the premises licence.

If this email has been forwarded to you, get it sent directly to your inbox by [supporting LRA for only £5 a year](#).

Could you help?

We had many new people volunteer to help LRA with various tasks in 2022. Can you help in 2023?

Can you help deliver Loughton Life? We need someone to deliver 21 copies to Wellfields, Whitehall Road and some adjoining streets.

Can you help maintain the lists of the volunteers who deliver them across the town?

(Other people receive the copies, split them up into individual delivery rounds and distribute them.)

To find out more, please contact David [by email](#) or call 07958 984278 for a no-obligation chat.



Planning and Licensing

[Read more on our website](#) about Planning and Licensing, the role of the LRA Plans Group (LRAPG), how to get more information and how to comment to the Town

Rear of 230-232 High Road (Corner of The Drive)

The application proposes adding eight flats to the rear of the existing building.



LRAPG have objected to this poorly designed development.

The lack of car parking will lead to pressure on adjacent streets which are already congested. The architecture is very poor; the rendered elements are clumsy and out of character with the area. The white rendered base will get dirty very quickly - good designers would not render the base of a building in white in a location like this. The air conditioning units for the shops at the rear will be lost and no consideration has been given to how they will be replaced. LRAPG has asked that the retail tenants on the High Road be asked to comment on this aspect of the development in order to ensure they are aware. The additional dwellings will also impact on the air quality to the Epping Forest Special Area of Conservation.

Reference [EPF/2869/22](#). The formal consultation period ends 19 January.



7 Forest Road

The application proposes adding two stories of office accommodation over existing retail shops.

LRAPG has objected to proposed extension by reason of its height, bulk and massing, which will stick out on this part of Forest Road to the visual detriment of Forest Road and this part of Loughton. LRAPG is also very concerned the quality of the drawings are so poor, it is impossible to assess the quality of the design. The application should have been made invalid.

Reference [EPF/2757/22](#). The formal consultation period ends 16 January.

113 Church Hill - Damaged Hoarding and Rubbish

A resident contacted us to report that the building site at 113 Church Hill was in a poor state with rubbish on the site and the hoarding in a poor state.



John Walker of LRAPG inspected the site and has asked the District Council Planning Enforcement Team to contact the owners to ask them to re-do the hoarding and clear the rubbish. If the owners don't respond he has asked the team to issue a Section 215 notice under the Planning Act which will make the owners do it.

Roads, Parking and Travel

Planned Road Closures

- Homecroft Gardens - the road will be closed until 9 February for gas main reinforcement works by Cadent. [More](#)
- M11 Junction 5 - the slip road to enter the M11 from Debden will be closed on January 20 for 6 hours from 11pm for electrical works ([more](#)), and on each night from 25 to 27 January for 7.5 hours for surveying works.

Dates can change so [check here for the latest updates](#), and for other planned roadworks including ones that involve only temporary traffic lights.



Vehicle Scrappage Scheme

A [new vehicle scrappage scheme](#) will be in place in preparation for the [expansion of the Ultra Low Emission Zone \(ULEZ\)](#) across all London boroughs from 29 August.

The ULEZ car and motorcycle scrappage scheme will only be open to applicants who live in one of the 32 London boroughs or the City of London and receive specific benefits. We assume that the District or County Councils will not have a similar scheme so those caught by ULEZ expansion living in Loughton who are unable to afford a new vehicle won't qualify.

Removal of Speed Humps on Smarts Lane

It was reported at the Local Highways Panel on 9 January that road humps in Smarts Lane will be removed north-west of Royal Oak Close and retained south-west thereof. It was also reported that Smarts Lane is **not** scheduled for resurfacing, contrary to what had been hoped, despite its condition.

Roadworks in October

In Epping Forest District, County Highways made 54 repairs to roads, fixed 45 pavement defects, fixed 96 streetlights and cleared 361 drains.

Tubes and Trains - Industrial Action

The latest updates on industrial action on the tube network are on the [TfL website](#) plus on [Twitter](#) and [Facebook](#). Updates from the rail network are on the [National Rail website](#), plus on [Twitter](#) and [Facebook](#).



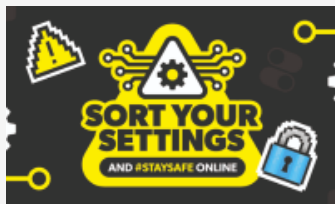
Police, Fire and Crime

What have the Police Done?

The police report that in Epping Forest District in December 2022, officers have:

- Helped to find 21 people who were reported missing and helped them to get the support they needed.
- Responded to 31 mental-health related incidents and worked with local partners to help those concerned get the help and support they needed.
- Investigated 62 reports of antisocial behaviour having listened to local communities about the things which were causing them concern.
- Attended 71 road traffic collisions, helping to keep those involved safe and our roads moving.
- Investigated 207 reports of domestic violence incidents and made sure victims were given help, support, and advice, putting them in contact with relevant organisations where appropriate.

- Solved 87 crimes, ensuring those intent on committing crime are held accountable for their actions
- Submitted 288 pieces of intelligence which assists us in targeting criminal activity in the community.
- Stopped and searched 82 people within the district to make sure they weren't carrying anything which could cause harm to themselves or someone else.



Sort your settings

Keeping your child safe online is not always an easy task. New technology, regular updates or upgrades can change how things work, sometimes making it difficult to keep up. Essex Police provide helpful advice on [things you can do](#) to make your child's online devices safer.

Helping Tackle Business Fraud

The Business Crime Team and Cyber protect officers of Essex Police provide a free and anonymous forum for business representatives from across the County and all sectors to pose questions or queries regarding business fraud and cyber crime.

This could include:

- Tips on measures to strengthen your online presence and security.
- Requests for information on available support and tools.
- Discussion of methods used by criminals and current trends in their targeting of business.

If questions are posed in advance of the session a 10-minute slot will be allocated for discussion. The sessions are online with the next one scheduled for 24 February at 11am with booking required. [More](#)

Inspectors Report on the Essex Fire and Rescue Service

[This report](#) is the third of a series and focused on the service's effectiveness, efficiency and people.

More from the Police

[Read more](#) from the police for our local area including other news and crime statistics.

Council News

New Charges for Additional and Larger Bins

The District Council have decided that charges will be introduced when residents request an additional garden waste bin or a larger refuse bin above the standard size (although these are not currently available). In addition, if a bin is lost or a resident cannot produce it, residents will be charged for a replacement bin.

There would be discretion to consider any exceptions to this, as when collections are

taking place bins can go missing when they do not go back outside the right property, or the rare occasion of when a person moves out of a property and take the bins with them.

Where a bin can be repaired, the repair would continue to be free of charge to residents.

Loughton Citizenship Awards

Do you know someone worthy of recognition for their community work or bravery? Nominations are invited for the 2023 Loughton Citizenship Awards. [More](#), with [nomination forms here](#)



Image: Town Council

Loughton Wombles

Loughton Wombles successfully carried out their seventh group litter pick on Saturday 3 December. We had a large response to our request to litter pick on this date, so they were split into three teams. [More](#)

If you'd like to join in and help, please [email Debbie](#) or call 020 8508 4200.

Volunteers to Help Spread Salt Grit

The Town Council is seeking volunteers to help spread their supply of salt grit on highways and public paths, on areas that are hazardous or particularly steep. [Email the Council](#) or call 020 8508 4200 if you'd like to help. [More](#)

Christmas Card Competition - Winners

Judging of the competition was undertaken by the Town Mayor and Deputy Town Mayor, as in previous years. The winners were:

- Infant School category - Florence Tufton (Alderton Infant School)
- Junior School category - Scarlett Roberts-Rhodes (Hereward School), Runner Up was Elsie Fourie
- Secondary School category - Victoria Yozova (Roding Valley High School)

Christmas Window Competition - Winners

The Town Council has thanked all the Loughton businesses that decorated their windows and joined in the town's festive celebrations in last year's Christmas Window Competition. The winners were:

Local Independent category - Emily Grace, Florist, 51 The Broadway
Multiple/Chain Store category - Chigwell Window Centre, 305-307 High Road
Charity Shops category - St Clare Hospice, 72 The Broadway
Eateries - Aura, 179-181 High Road

The national charities chosen by the category winners will each receive a £75 donation from the Town Council. This year they are the National Autistic Society, Haven House Children's Hospice and St Clare Hospice. [More](#), including photos.

Community Warm Places

Warm Places provide a free, safe, warm and comfortable space for those who need it throughout winter. Locations in Loughton include Debden and Loughton Libraries, New City College, Oakwood Hill Community Centre, St Mary's Church, St Michael's Church and Trinity Methodist Church. [Check the details and opening times here.](#)



Support with the Cost of Living

[Find out what support](#) is available to help with the cost of living. This includes income and disability benefits, bills and allowances, childcare, housing, travel and for small businesses.

Volunteers Wanted

The District Council are looking for volunteers to join the Buddy Up project supporting adults 18+ with learning disabilities, autism or both to support them accessing community activities. While this is a volunteering role expenses incurred while accompanying a client on outings perhaps to the cinema, coffee shop or exercise class will be covered. [More](#)



Some Help with Maths

We use maths everyday without even realising. From helping children with their schoolwork, to cooking or as part of our job, maths is part of our daily lives. For lots of us though, maths might feel like a daunting subject.

Multiply in Essex is a new, free, programme aiming to help out for those aged 19 and over. [More](#)

First Essex Climate Action Annual Report launched

The County Council has launched its first [Annual Climate Action Report](#). The report includes details of action taken across the County to help fight climate change, interesting case studies, and facts and figures. There is also information on funding available for climate action in Essex.

Creating a Carers Community in Essex

Unpaid carers in Essex play a vital role in supporting families and friends to live independently within their own homes and communities. Many of them simply see it as their role to support relatives, friends and neighbours who need help to live independently. They won't identify as a "carer" and not realise there is information, advice, guidance and support if and when they may need it.

The County Council now provides via [Mobilise](#) free personalised guidance and coaching, website guides, regular contact through emails, a guide to caring e-course, 'virtual cuppas' and even individual support calls seven days a week. [More](#)

Local News

Helping Out this Winter

Times are hard for many people. Why not:

- donate to [a food bank](#)
- donate to [a shelter](#)
- volunteer to be a [Warm Welcomer at your local library](#)
- volunteer at [Voluntary Action Epping Forest](#) or [Volunteer Essex](#).

Loughton's Water Supply

Residents may have noticed some recent short interruptions to their water supply recently, and held their breath hoping there wouldn't be a repeat of the incidents in late 2021. Thankfully, supply was only interrupted for a short time.

As a reminder, if you have water supply problems:

- Thames Water do provide [website](#) and [Twitter](#) updates, although the latter isn't always up to date.
- Please continue to report any issues to Thames Water [online](#) or call 0800 316 9800. If the situation becomes urgent, do tell them and request bottled water.
- If you are out walking, keep an eye out for any new mains water leaks and report them too, as the leak may be the start of yet another problem.

As a precaution:

- If you're on the point of junking your cold water tank and hot water cylinder - think twice! The water in your tank and cylinder can refill even if the water pressure is low.
- Keep a supply of bottled water in the house for either drinking or flushing toilets.
- If you, or someone you know, needs a little extra support perhaps because of their health, disability, age, or if they're going through a difficult time in their life, Thames Water has a free priority services register. This provides additional support when the water is off and leaving the house is not possible, including bottled water deliveries where possible, prioritising those who are dependent on water for medical needs. [More](#)




Is Your Home Prepared for an Emergency?

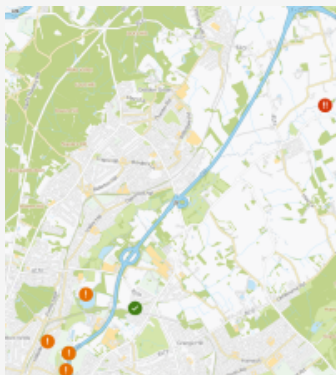
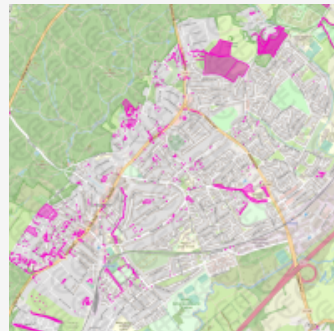
Preparations should include making sure you have key information, medication, a phone charger and warm clothing to hand if you had to leave your home in an emergency. [Here's some detailed guidance](#) with checklists and templates for recording important phone numbers and addresses. [More](#)

What Trees are Protected?

There is now, for the first time, [a map where you can see](#) what trees have Tree Preservation Orders. ([More on TPOs](#)).

Click on the layers icon () at the top right. In the box that appears, scroll down and tick the box next to "Tree Preservation Order (TPO)".

Both block (area) TPOs (hatched pink) and individual TPOs (pink blobs) will appear. You can also choose the Conservation Area (CA) layer, as formal notice (a "TPX") has to be given before a tree in a CA is felled, which is not easy to obtain.



Are There Sewage Spills Nearby?

Thames Water now provide [a map on where sewage spills happen](#). This enables us to know, in real time, which Combined Sewer Overflows (CSO's) are spilling.

Until now, it has not been possible to know where sewage spills happen on the River Roding, and this map has come about after much lobbying by groups like London Waterkeeper and Thames21.

[More](#) from Friends of the River Roding.

High Road Shop Closure

We understand The Body Shop at 206 High Road is closing in mid-January, with the shop now [advertised to let](#).

Taking Care Around Icy Water

Areas with frozen lakes, ponds, canals and reservoirs can be beautiful places to visit during the winter months but too many people risk their lives by venturing into or onto frozen water. The Essex Fire and Rescue Service recommends:

- Teach children not to go onto the ice under any circumstances
- Don't go onto ice or into the water to rescue a dog. Instead, move to a place the dog will be able to climb out and call them towards you
- Keep dogs on leads near ice and don't throw sticks or toys onto the ice
- Time your walks to make the most of the daylight; if you need to walk in the evening only use well-lit areas or take a route which avoids water
- Keep well away from the edge when walking near water

[More](#), including advice on what to do if someone falls through the ice.

Health and Wellbeing

Covid and Flu Vaccines

[Read more](#) on getting a Covid and Flu vaccine. It's never too late to come forward for your Covid vaccine and you can use [a walk in centre](#) or [book an appointment](#), or call 119 for more help.

Do You Overpay for your Prescriptions?

A Prescription Prepayment Certificate will save money if you need more than 3 items in 3 months, or 11 items in 12 months. A PPC costs £30.25 for 3 months or £108.10 for 12 months and covers all your NHS prescriptions for a set price. You can buy a PPC [online](#) or at Boots on the High Road.



NHS Industrial Action

This month, some services may be affected due to strike action. Continue to come forward for NHS care, if you need medical help use 111 online. In emergencies call 999.

[More on where to go for help](#) from the NHS.

Epping Forest

Avian Flu

As Avian flu has been detected in the Forest, [here are precautions](#) you can take with wild, sick or dead birds.

You can [report a dead wild bird here](#), or call 03459 33 55 77. You can report sick or injured wild birds to the [RSPCA](#) by calling 0300 1234 999.

If you have bird feeders in your garden, the [RSPB advises](#) good hygiene is key. [Clean bird feeders and feeding stations weekly](#) and change bird drinking and bathing water regularly. It is normal this time of year to see fewer birds in your garden and this is not linked to avian flu.

Famous Forest Figures

There is an exhibition on those involved with the Forest who became well-known: poets, writers, artists, scientists, educators, reformer and one notorious villain. Learn a little about their lives and where they lived or worked at an exhibition at the Epping Forest Visitor Centre at Chingford. The exhibition is free and opens from 10am-4pm, Tuesday to Sunday until 26 February.

70 Trees for 70 Years of Queen Elizabeth II's reign

His Royal Highness the Duke of Gloucester, Ranger of Epping Forest, alongside civic leaders from the City of London Corporation, and the London Boroughs of Redbridge, Waltham Forest, and Newham, planted the final trees in a grove of 70 Silver Birch at Wanstead Flats in December. [More](#)



They represent the 70 years of Queen Elizabeth II's reign and will be dedicated as part of [The Queen's Green Canopy](#) campaign. This is a tree planting initiative created to mark Queen Elizabeth II's Platinum Jubilee last June. Following her passing in September, His Majesty The King agreed to extend the scheme to allow people to plant trees in her memory.

Heathland restoration

Walking in the Forest, you may come across bare scrapes in the ground. These are part of conservation work being undertaken help restore the Forest's heathlands. Competitive grasses and bracken have spread across the heathlands crowding out other heathland species such as heather, mosses and lichens. These scrapes are being made to remove the competitive plants to reveal the soil and allow seeds of other heathland plants to germinate.



Forest Focus - January 2023

Some items here come from *Forest Focus*. [The latest edition](#) has lots more interesting articles. [You can subscribe here for free.](#)

And More

Winter Composting

A compost bin will still be working even in cold weather. Here are tips from Love Essex on composting in the winter, including how to start trench composting.



You can get a [compost bin from as little as £12](#) (the cost is subsidised by the County Council) plus cost for delivery. Love Essex also provide [a free online course](#) to get you started. (Use the Guest password of 'LoveEssexCompost'.)

What Benefits are you Entitled To?

[This tool](#) asks you a series of questions to work out what benefits you may be entitled to. The calculator is free to use, and the details you provide are anonymous.

Thank you for supporting LRA. Our next Loughton News email is due to be issued Friday 10 February although that date could change.

Get more from LRA and keep up with what's happening between issues of Loughton News

For all our Tweets, past issues of Loughton News and Loughton Life, and more



For the latest news and items of interest:



You don't need to be registered for either

1. If you find any links not working or anything else is wrong let us know at loughtonnews@LoughtonResidents.co.uk. Links to on other websites are beyond our control and may not work over time.
2. LRA gives no warranty about, and will take no responsibility for, items or services offered – purchasers/users should make their own enquiries, and will be acting at their own risk.

We can be contacted at contact@LoughtonResidents.co.uk

To update your membership details, email membership@LoughtonResidents.co.uk

© 2023 Loughton Residents Association

Promoted by & on behalf of Independent Loughton Residents Association, 28 Brook Road, Loughton IG10 1BP

This email was sent to <<First Name>> <<Last Name>> at <<Email Address>>. You are receiving this email as a member of Loughton Residents Association and have subscribed to receiving emails from us.
[Unsubscribe from emails from LRA](#)