



## LRA's Loughton News

25 November 2022

In this issue we let you know LRA's views on the latest proposed changes to the Local Plan, and give a reminder that you can still comment on the planning applications for the [demolition of Loughton Library](#) and a block of [flats replacing three houses on Alderton Hill](#). You can make a difference.

Around town, there was the [Remembrance Sunday parade](#) recently, [Light up a Life](#) is happening shortly, and [Santa is coming to The Broadway](#) in December.

As the weather turns colder and the nights draw in earlier, the police offer some [advice to help keep burglars away](#) and the Fire Service offers [tips to be fire-safe](#).

The cost of living has become a big concern to all, and [support is available for those whose health and wellbeing is at risk](#), there are places where you can [find warmth over winter](#) and [general support is available](#).

LRA is 100% run by volunteers locally. We've been asking for volunteers to do various tasks for LRA this year and have had many people responding, with quite a few of them new to LRA. Thank you to everyone who volunteered.

You can always contact us by email at [contact@loughtonresidents.co.uk](mailto:contact@loughtonresidents.co.uk) to raise an issue, to give your views, or to offer help.

### News Sections

[LRA News](#)

[Planning and Licensing](#)

[Roads, Parking and Travel](#)

[Police, Fire and Crime](#)

[Council News](#)

[Health and Wellbeing](#)

[Local News](#)

[Epping Forest](#)

### Your LRA



[LRA Website](#)



[LRA on Twitter](#)



[LRA on Facebook](#)

[Contact LRA](#)

[Links not working? Read the online version](#)

## LRA News

### New District Local Plan

As reported in our [previous news email](#) the [consultation on changes](#) to the Main Modifications of the Local Plan will run until December 9th.

The proposed changes are those thought necessary by the new Planning Inspector. After this consultation period, further changes may be made to the Main Modifications (MMs), which will then be submitted to the Planning Inspector to determine whether the Local Plan is 'sound' and thus considered to be agreed and final.

[Background on our website.](#)

**LRA comment:** LRA doesn't believe that the new MM on protecting the Forest Special Area of Conservation (SAC) from air pollution from vehicles is strong enough to prevent further damage to the SAC from new housing and other developments nearby, unless such schemes are car-free. We will be commenting on the changes we think are needed.



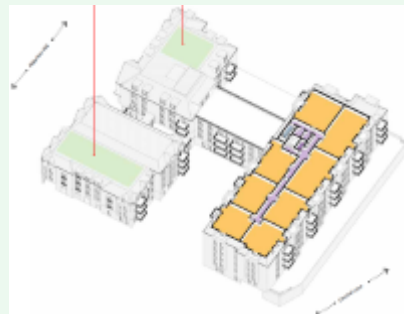
### **Demolition of Loughton Library**

As we reported [previously](#), the County Council applied for planning permission to demolish Loughton Library on Traps Hill and replace it with a 5-storey block including a smaller branch library.

Although the consultation has ended, you can still send your comments by post to the County Council ([more on our website](#)). [You can read LRAPG's letter of objection here.](#)

### **13 – 15A Alderton Hill Another proposed block of flats**

As we reported [previously](#) there is a new planning application for demolition of houses at 13, 15 and 15a Alderton Hill, which will be replaced by linked blocks of 89 elderly person's apartments. Although the consultation has ended, you can still send your comments by email or post to the District Council ([details on our website](#)).



*If this email has been forwarded to you, get it sent directly to your inbox by [supporting LRA for only £5 a year](#).*

### **More Progress with Potholes by Cllr Pond**

As a result of LRA Cllr Chris Pond nominating potholes to repair, the following potholes are among those scheduled for repair (and may have already been fixed):

- Old Station Road - in the bus stop heading towards the station.
- Alderton Hill - four outside No. 48, 52 and 54.
- In front of Loughton Station near the bus stops.



Chris can report only potholes in Loughton Central county division.



### **Santa Claus is Coming to Town on The Broadway**

Santa's Grotto is from 3-5pm on Friday, December 2nd at the District Council Housing Office, 63 The Broadway.

Enjoy free children's entertainers at St John's on the Broadway from 3:45pm. All children must be accompanied by an adult.

This is organised by the Broadway Town Centre Partnership (BTCP), of which LRA Cllr Rose Brookes is Interim Chair. BTCP would like to thank the District Council, Debden Traders Association, New City College, St John the Baptist Church, The Bookshop on the High Road and generous donations from many Loughton residents that have made this event possible.

### **LRA's Christmas Quiz**

Following tradition, [here's our Christmas quiz](#) for everyone to enjoy. The theme is based on Essex, or former Essex, Towns and Villages. Bottles of fizz or a £15 book token to the first correct answer drawn out. So, atlases ready....



Answers, please, to [lesandsueharris@aol.com](mailto:lesandsueharris@aol.com) or by post to 32 Upper Park, Loughton IG10 4EQ, by January 6th 2023.

### **Meet your Alderton Ward LRA Cllrs**

Alderton ward councillors hold their monthly drop in surgery every 1st Saturday of the month from 2pm-4pm at Guilloti Cafe on Borders Lane. The next one is on Saturday December 3rd. Come by to discuss any ward issues. No registration or booking is needed. [More](#)

## ***Planning and Licensing***

[Read more on our website](#) about Planning and Licensing, the role of the LRA Plans Group (LRAPG), how to get more information and how to comment to the Town Council and the District Council, and to the LRA Plans Group – please have your say.

### **127 High Road**

This is an application to change the use of the rear section of the Inline Designs Kitchen supply shop and the upper floors' offices to five residential dwellings, construction of a two and a half storey rear extension, and alterations to the roof and associated works.

LRAPG has objected on the grounds that too much is being crammed into the site. Five flats with no parking will impact on the surrounding streets. The layout and spacing of the residential accommodation is very poor and the loss of retail floorspace will impact on viability of the existing retail shop. The extra flats will

also impact on the Epping Forest Special area of Conservation.

Reference [EPF/0974/22](#). The formal consultation period ended November 23rd, but you can still comment to the Council.

### **40 Church Lane**

This is an application to demolish the existing bungalow and erect two detached houses.

This part of Church Lane is characterised by large houses that are well set back with substantial gardens to the rear. LRAPG has objected as it considers squeezing in two houses will be out of character with the area. The proposal will also result in the loss of trees and greenery to what is an attractive frontage. There will also be unacceptable overlooking to No. 2 Hill Top Place to the rear.

The Council has policies to protect bungalows, particularly for people with disabilities and there will be an impact on the SAC. The proposed houses are poorly designed and lack any character. They will be out of keeping and detrimental to the special character and architectural interest of Church Lane.

Reference [EPF/2475/22](#). The formal consultation period ends November 29th.

## ***Roads, Parking and Travel***

### **Planned Road Closures**

- Homecraft Gardens - the road will be closed from November 21st until December 23rd for gas main reinforcement works by Cadent. [More](#)

Dates can change so [check here for the latest updates](#), and for other planned roadworks including ones that involve only temporary traffic lights.



### **Bus Route 418**

The operator has changed to Vectare of Loughborough and the route has been extended to the Talbot pub at North Weald. The route runs to and from Loughton Station, through Debden, Theydon Bois, Epping, St Margaret's hospital and North Weald.

[The map is here](#) and [the timetable is here](#). Adult [fares](#) from Loughton range from £2 to £2.50 with fares for those aged under 19 discounted. Contactless payments are also accepted.

### **Free off-street parking**



Weekend parking is free in District Council-run [off-street car parks](#) at the weekends and bank holidays throughout December. [More](#)

### **Gritting the Roads**

This winter, Essex Highways will have 15 new gritters with improved visibility thanks to state-of-the-art driver aids such as a 360 degree camera system and sensors to enable drivers to know exactly what is around them and where at all times. Gritting and ploughing operations are managed by a single touch screen control box in the cab.

[More](#) including gritting routes, Essex Highways [Twitter feed on the gritters](#) and [track the gritters on a map here](#).

Could you name one of the new gritters? [Enter this competition](#).

### **Roadworks in September**

In Epping Forest District, County Highways made 82 repairs to roads, fixed 42 pavement defects, fixed 82 streetlights and cleared 1879 drains.

## ***Police, Fire and Crime***

### **Local Policing during the football World Cup**

The police have urged fans to watch matches and behave responsibly, whether that be in one of the many venues around the county which will be showing matches, or at home with family and friends. Football tournaments can lead to an increase in the risk to public order and they are planning for additional resources to be in place on match days.

[Read more](#) about plans for tackling the increased risk of drink driving, domestic abuse, hate crime, and safety in licensed premises.

### **Help keep burglars away**

Lighting is a good deterrent and is recommended by the police as it makes it safer for you when coming and going after dark. A clear, low white light that activates at dusk to dawn is ideal for lighting a garden and allowing any person to be clearly seen. Take care to position these lights so that light pollution doesn't annoy your neighbours.

Burglars will use a variety of ways to avoid being noticed. They don't want to be seen or heard by a neighbour or passer-by because they will feel exposed and identifiable. Essex Police offer some simple [tips on keeping your home safe](#) this winter.

With money short for many, there are still things you can do to protect your home and belongings for little or no cost. [Here's some tips on home security on a budget](#).

## Household support scam

Scammers are looking to take advantage through cold calling. The scammer will call you claiming you are eligible for household support schemes. These schemes are real which is what they are taking advantage of. The scammer will ask you for your bank details where your council will not. If in doubt hang up then look for the council or organisations contact details from a trusted source and get in touch that way. [More on protecting yourself from fraud.](#)

## Scam Event Alert

A scam event is being widely advertised on social media which the County Council and the police have been made aware of. This is being called 'Enchanted Forest' at Great Notley Country Park in December.

The Council has confirmed it has not been approached about a booking or given approval for the event and encourages people who see it being promoted not to be tempted to book tickets or share any personal information. If anyone has paid or lost money to a ticket scam, report it to Action Fraud [online](#) or call on 0300 123 2040 and contact your bank or credit card provider. More advice is available from Citizens Advice by calling 0808 223 1133.

Details of all official events taking place at County Council parks can be found [online](#).



## Stay Fire Safe this winter

The Fire Service is urging people to protect themselves from accidental fires and carbon monoxide poisoning while keeping warm and cutting energy use this winter. The call comes following concerns that the cost of living rise will mean people could turn to alternative ways of heating and lighting their homes. [More](#) and [tips to save safely are here](#).

For people most at risk of fire or with concerns about fire safety in their home, the Fire Service offer a free home fire safety visit. Book a visit for yourself or for someone you know [online](#) or call 0300 303 0088.

## Will you be using an electric blanket this winter?

Electric blankets can be a cost-effective way to keep warm this winter however use them with care to reduce the risk of fire.

- Always buy new when choosing an electric blanket - never buy secondhand blankets, as they may not be safe and you can't be sure that they meet current safety requirements
- Always read and follow the manufacturer's instructions before use
- Examine your blanket regularly for signs of wear or damage
- Never use an electric underblanket as an overblanket (or vice versa)
- Do not use the blanket while it's still folded or creased
- Do not use a hot water bottle at the same time as using your electric blanket
- Do not touch the blanket if you have wet hands or feet, and never use the blanket if it is wet or damp

Electric blankets should be checked by a qualified technician every three years for signs of wear or damage.

### **Women's night-time safety survey**

A county wide survey on women's safety by the County Council last year found that women felt most unsafe at night with 47% of respondents saying this. The survey also found that 21% of women felt unsafe in pubs, clubs and bars at night with 45% of women avoiding certain nightlife or hospitality venues because they made them feel unsafe.

Residents are being asked to share their views on night-time safety with a particular focus on anything related to businesses and services that run during the night such as pubs, bars, clubs and restaurants. While this research is focused around women's safety, the survey is open to both men and women. [More](#)



### **More from the Police**

[Read more](#) from the police for our local area including other news and crime statistics.

You can also [Ask the Police](#) which is an official police resource that provides answers to a wide variety of the general public's most frequently asked policing questions.

## **Council News**



### **Remembrance Sunday Parade**

The commemorations took place on Sunday November 13th, beginning with the Annual Parade from Loughton's Royal British Legion Headquarters in Church Hill to the War Memorial.



This was followed by the Remembrance Service and Poppy Wreath ceremony and ended with the march off up Church Hill. [More including photos of the day.](#)

### **Light up a Life**

The annual Light up a Life service takes place on Saturday November 26th. Meet at the Methodist Church from 4:30pm for the torch lit procession to Kings Green at 4:45 followed by the switching on of the lights. Hot drinks and mince pies will be served afterwards back at the foyer of the Methodist Church. [More](#)

Image: Town Council



## Rubbish and Recycling Waste Collections

There's been much disruption to bin and recycling collections due to contractor staff shortages and vehicle breakdowns. The District Council maintain a list of where collections are missed. [Check if your road is on the list and what to do here](#)



## Loughton Wombles

The Loughton Wombles successfully carried out their sixth group litter pick on October 15th. Group 1 – 5 Wombles met outside Loughton Station and carried out a great job litter picking the Great Eastern Path. Group 2 – 8 Wombles met at Thomas Willingale School and litter picked Torrington Drive and the surrounding area up to Sainsburys and also covered the area near to

Loughton Brook. [More](#)



If you'd like to join in and help, please [email Debbie](#) or call 020 8508 4200.

Images: Town Council

## Christmas Window Competition

The Town Council has invited all Loughton's businesses to decorate their shop windows in a Christmas themed design. All shops and businesses within the Town Council's boundaries are eligible and will be automatically entered in the competition. Window decorations must be completed for when the judging commences on December 1st. [More](#)

## Loughton Town Council grants (year to October)

Organisations who have awarded grants in 2022/23	been	Amount awarded	Item
Alfie James Productions		£200	Performance skills workshop
Affordable Counselling		£500	Counselling sessions
Basics Essex		£1000	Assistance towards equipping a new doctor



Epping Forest ReUSE	£485	Operational Costs (safety boots/uniform)
Lopping Hall Art c/o Lopping Hall	£300	Hire of display boards for exhibition
Loughton Chigwell & District Synagogue	£500	Supply of weekly food parcels
Loughton Voluntary Care Association	£391	Phone bill and premises rental
Restore Grow Community Garden	£2500	Running Costs
Restore Community Noah's Ark	£3000	Crafts, toys and running costs
Restore Community Oakwood Hill Community Centre	£3000	Operational Costs
Restore Community Oakwood Hill Youth Club Project	£2000	Operational costs and equipment
Samaritans Redbridge Branch	£700	'Complex cases' counselling service
Spark a branch of Worth Unlimited	£1500	Counselling sessions
3Food4U	£3500	Rent of foodbank venue
Voluntary Action Epping Forest	£1500	Operational Costs
The Lopping Endowment Corporate Trustee Limited	£1000	Defibrillator
<b>Total awarded</b>	<b>£22076</b>	

### Town Council grants (for next financial year)

Local groups, organisations and charities are invited to apply to the town council for financial assistance for the period from April 2023 to March 2024. The closing date for applications is December 31st. [More](#)

Does your group need some financial help?



**GRANTS**

### The Town Council has moved

Because of the County Council's intention to demolish Loughton Library on Traps Hill and replace it with a 5-storey block/smaller library, the Town Council has moved out of Loughton Library and is now at 1 Buckingham Court, Rectory Lane, IG10 2QZ.

The email address of [contact@loughton-tc.gov.uk](mailto:contact@loughton-tc.gov.uk) and phone number of 020 8508 4200 have not changed.

### Volunteer Action Epping Forest Winter Warmth Support

VAEF will be delivering services to residents in the District in support of the County Council's Winter Warmth Campaign.

The service will provide help to those whose health and wellbeing is at risk during the cold weather, and will support older and vulnerable people deemed in need in the District by providing:

- food parcels
- warm clothing / bedding
- small heating appliances & microwaves
- fuel tokens
- fitting draft excluders & curtain rails
- sealing windows

Referrals to this service must be through a registered agency such as a District Nurse, GP, Health/Social Care professional, school or voluntary and community group.

Email [communityhub@vaef.org.uk](mailto:communityhub@vaef.org.uk) or call 01992 910 701 for more information.

## Community Warm Places

Warm Places provide a free, safe, warm and comfortable space for those who need it throughout winter. Many of the venues are offering refreshments (with some offering hot food), activities such as board games and Wi-fi.



Locations in Loughton include Debden and Loughton Libraries, New City College, Oakwood Hill Community Centre, St Mary's Church, St Michael's Church and Trinity Methodist Church. [Check the details and opening times here.](#) and please share with anyone you know who may struggle this winter to keep warm.

The County Council are also looking for individuals to run activities, provide refreshments and signpost residents to support this winter. [Can you help?](#)



## Support with the Cost of Living

[Find out what support](#) is available to help with the cost of living. This includes income and disability benefits, bills and allowances, childcare, housing, travel and for small businesses.

## Do I contact Qualis or the District Council?

The District Council and Qualis provide different services for Council tenants and leaseholders. If you are unsure who to contact, [here's a handy list of services and contact details.](#)

## Do I contact Qualis or EFDC?

Epping Forest District Council (EFDC) set up Qualis Group Ltd in 2009 to enhance Epping Forest district through regeneration, investment and asset management to support the community. Qualis Management is the asset management part of Qualis Group. To help you seek the right person quickly and efficiently and clarify who you need to contact, we have listed below what services Qualis Management and EFDC deal with.



- General repairs – outside and inside your home and to communal areas
- Gas heating breakdown/repairs
- Annual gas safety checks
- Fire/smoke safety checks
- Void/empty properties – Propping down to avoid risk to EFDC to use
- Planned works programme – Full replacement of boilers and bathroom installations and electrical reviews
- Customer Feedback including complaints, compliments and customer satisfaction (see contact below)

Contact Qualis Customer Service Centre  
 ☎ 0333 320 0444  
 ✉ [enquiries@qualismanagement.co.uk](mailto:enquiries@qualismanagement.co.uk)  
 🌐 [qualismanagement.co.uk](http://qualismanagement.co.uk)  
 📍 Available via our website above (Mon-Fri 10.00 – 16.30 except bank holidays)  
 For Qualis Management Customer Feedback please contact:  
 Call our Customer Service Centre on the number above or  
 ✉ [feedback@qualismanagement.co.uk](mailto:feedback@qualismanagement.co.uk)  
 🌐 [qualismanagement.co.uk/Feedback/](http://qualismanagement.co.uk/Feedback/)

- Major planned works programmes (incl. full boiler replacement, front and rear door replacement, complete roof replacement and estate regeneration)
- Properties with major structural issues
- Some larger works will be referred to EFDC where their Housing Assets team will manage
- Authorisation for alterations to your home
- Boilers and Land / Ground maintenance
- Disabled adaptations to your home following Occupational Therapist (OT) referral
- Tenancy and Housing enquiries
- Rent enquiries
- Home ownership/leaseholder enquiries

EFDC cover a wide range of services including council tax, recycling and rubbish collections, planning applications as well as many more services and these can be found on their website listed below.  
 Contact EFDC Customer Service Centre  
 ☎ 01992 554300  
 🌐 [www.eppingforest.gov.uk/](http://www.eppingforest.gov.uk/)



## Autumn and Winter Activity Programme

Bookings are now open for the District Council's autumn and winter activity programme. There is a series of seasonal workshops for adults including wreath making and new Zoom talks as well as Wellbeing Wednesdays taking place at the

Epping Forest District Museum. [More](#)

## Essex Youth Survey

The County Council is running a survey for those aged 11-25 to help inform services, decisions and activities for young people across the county. [Complete the survey here](#). The survey closes December 11th.

## Local News

### District Council Cash Office on The Broadway to close

As reported previously, the office will close on November 29th, which includes the cash desk and the services for housing management.

The Council are offering an AllPay card which allows for cash payments at the Post Office and PayPoints for residents who prefer to pay in cash. Residents who use the Council's housing management services already have these cards. Council Tax and business rates customers who have made a payment at the Debden office since it reopened in April 2021 have been sent cards by post. [More](#)

From Monday 7 November, AllPay cards will be sent out to residents and businesses who have recently paid their Council Tax or business rates in cash at the Debden cash office.

From December 1st, the District Council housing management team will move to the Oakwood Hill Community Hall on Longcroft Rise every Thursday (this may vary over the Christmas period) from 9:30am to 12:30pm.

### Thames Water lifts hosepipe ban

The hosepipe ban, which imposed restrictions on water use, was implemented to give rivers and reservoirs a chance to recover after a long period of low rainfall. Restrictions have now been lifted as wet weather throughout autumn has begun to make a real difference, following on from a year of below average rain. In many places the ground is becoming wet enough for water to sink down into the underground sources that feed local rivers. [More](#)

## Health and Wellbeing

### Covid Vaccine

[Read more](#) on getting a Covid and Flu vaccine. It's never too late to come forward for your Covid vaccine and you can use [a walk in centre](#) or [book an appointment](#), or

call 119 for more help.

[A further Covid booster is available](#) to all adults aged 50 years and over, and at-risk groups. [Book online](#) or call 119.

### **Local Infection Rates**

The [local data for Epping Forest is here](#).



### **Special Educational Needs and Disabilities**

The County Council provides [information about support available](#) in Essex for children and young people aged under 25, with special needs and disabilities (SEND). This includes:

- understanding what to do if you're new to SEND
- browsing for local support such as support groups, fun activities or specialist healthcare
- finding out what to do in a complex situation, for example if you need to appeal a decision
- getting advice for young adults with SEND, such as housing and employment support

[More](#)

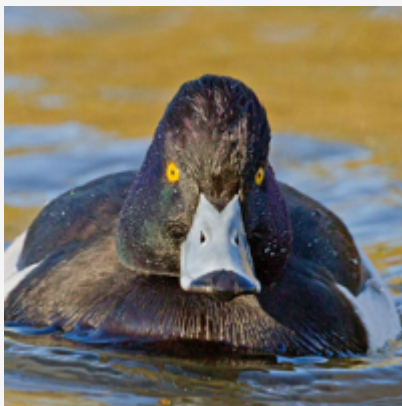
## **Epping Forest**

### **Avian flu**

Avian flu has been detected in Epping Forest.

- Do not feed wild birds.
- Do not touch dead or sick birds.
- Keep dogs away from wild birds.
- Do not touch wild bird feathers or surfaces contaminated with wild bird droppings.
- Please report dead wild waterfowl, gulls or birds of prey to 020 8532 1010.

[More](#)



### **Connaught Water**

Connaught Water is an artificial lake, with four islands, constructed in 1881 and enlarged in 1893. The lake was designed by William D'Oyley for Queen Victoria's visit to Epping Forest in 1882. It is filled by drainage off the Forest. It was once used as a boating lake in summer and a skating lake in winter.

Skating and boating are no longer permitted on Connaught Water but it remains a popular destination for bird watchers, dog walkers, runners

and those looking for a picturesque walk. At this time of year, it is a great spot to look out for more unusual winter migrants such as pintails, goosander, teal, tufted duck, smew and shoveller.

Image: [Forest Focus](#)

### Carols in the Courtyard

Festive singing will take place at the Epping Forest Visitor Centre in Chingford on December 17th at 2:30pm. [More](#)



### Guided Walks in the Forest

The [Epping Forest Heritage Trust](#) organise regular guided walks through the Forest. Booking is essential but walks are free. Upcoming walks include:

- Discovering the Forest north of High Beach. [More](#)
- A Christmas Trail through the Forest. [More](#)
- New Year's Day Walk at Knighton Woods. [More](#)



### Forest Focus - November 2022

Some items here come from *Forest Focus*. The latest edition has lots more interesting articles. [You can subscribe here for free.](#)

## And More

### Can you recycle kitchen roll?

[LoveEssex](#) reports that, according to a [recent survey](#), kitchen roll is the most common household item which people confuse for being recyclable. 32% of people assume it can be recycled but in fact the paper fibres are too short for the recycling machines.

Depending on what it's been used for, kitchen roll can be a useful addition to your [home composting bin](#). You can recycle the inner cardboard tube with your usual cardboard recycling collection. [More news and ideas from LoveEssex here.](#)

---

*Thank you for supporting LRA. Our next Loughton News email is due to be issued Friday December 16th although that date could change.*

## Get more from LRA and keep up with what's happening between issues of Loughton News

For all our Tweets, past issues of Loughton News and Loughton Life, and more



For the latest news and items of interest:

Visit LRA  
on Twitter



Visit LRA  
on Facebook



*You don't need to be registered for either*

1. If you find any links not working or anything else is wrong let us know at [loughtonnews@LoughtonResidents.co.uk](mailto:loughtonnews@LoughtonResidents.co.uk). Links to on other websites are beyond our control and may not work over time.
2. LRA gives no warranty about, and will take no responsibility for, items or services offered – purchasers/users should make their own enquiries, and will be acting at their own risk.

We can be contacted at [contact@LoughtonResidents.co.uk](mailto:contact@LoughtonResidents.co.uk)

To update your membership details, email [membership@LoughtonResidents.co.uk](mailto:membership@LoughtonResidents.co.uk)

© 2022 Loughton Residents Association

Promoted by & on behalf of Independent Loughton Residents Association, 28 Brook Road, Loughton IG10 1BP

This email was sent to <<First Name>> <<Last Name>> at <<Email Address>>. You are receiving this email as a member of Loughton Residents Association and have subscribed to receiving emails from us.  
[Unsubscribe from emails from LRA](#)